



**ELECTRONIC COPY**

XXXXX519220  
Report verification at igi.org



April 23, 2025

IGI Report Number XXXXX519220

Description **LABORATORY GROWN DIAMOND**

Shape and Cutting Style **CUT CORNERED  
RECTANGULAR MODIFIED  
BRILLIANT**

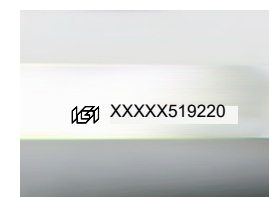
Measurements **14.02 X 9.13 X 6.18 MM**

**GRADING RESULTS**

Carat Weight **7.22 CARATS**

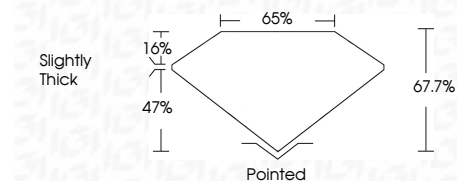
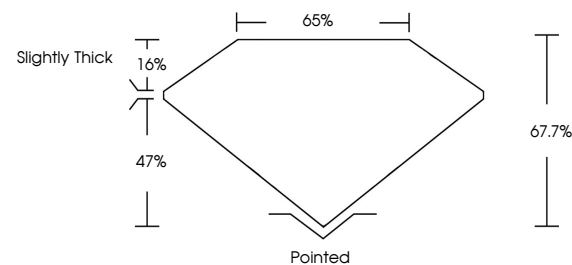
Color Grade **E**

Clarity Grade **VVS 1**

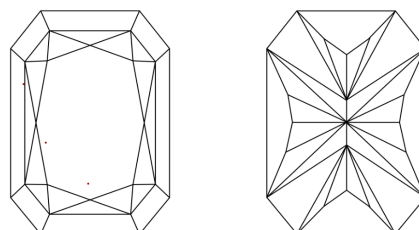


Sample Image Used

**PROPORTIONS**



**CLARITY CHARACTERISTICS**



**KEY TO SYMBOLS**

Red symbols indicate internal characteristics.  
Green symbols indicate external characteristics.

**COLOR**

D E F G H I J Faint Very Light Light

**CLARITY**

IF WS<sup>1-2</sup> VS<sup>1-2</sup> SI<sup>1-2</sup> I<sup>1-3</sup>

Internally Flawless Very Very Slightly Included Very Slightly Included Slightly Included Included

**ADDITIONAL GRADING INFORMATION**

Polish **EXCELLENT**

Symmetry **EXCELLENT**

Fluorescence **NONE**

Inscription(s) XXXXX519220

Comments: This Laboratory Grown Diamond was created by Chemical Vapor Deposition (CVD) growth process. Type IIa



**IGI**

April 23, 2025	IGI Report No. IGI696519220	CUT CORNERED RECT. MODIFIED BRILLIANT	14.02 X 9.13 X 6.18 MM	7.22 CARATS	E	VVS 1	67.7%	65%	Slightly Thick	Pointed	EXCELLENT	EXCELLENT	NONE	XXXXX519220
<p>Comments: This Laboratory Grown Diamond was created by Chemical Vapor Deposition (CVD) growth process. Type IIa</p>														